



CHECKSUM 12KNTM

Off-Line Test System

CheckSum 12KN Off-Line Test System

Powerful test system that supports the complete suite of CheckSum's test capabilities for ICT, ISP and PFT (Parallel Functional Testing). Designed for high volume PCBA panel testing applications.

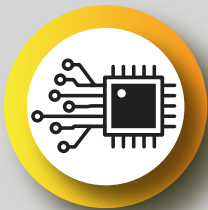
- Supports all CheckSum Test Electronics
- Dual-Level Probing for Physical Isolation
- Easy Integration with 3rd Party Instrumentation
- <60 Second Fixture Changeover
- Rapid and Precise Press Actuation
- Up to 5200 Test Points Supported



Parallel Test Maximum Productivity

Each test system utilizes our advanced communication architecture enabling more testing in one fixture with CheckSum's breakthrough Parallel Test technologies:

Unmatched Parallel Test Capability



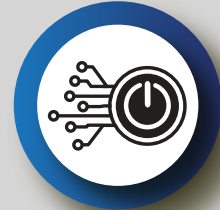
CHECKSUM ICTTM

4X Faster In-Circuit
Panel Test



CHECKSUM MultiWriterTM

Program up to 384
Devices in Parallel



CHECKSUM PFTTM

Functionally Test an Entire
Panel of Boards in Parallel

The Power of ParallelTM

Why Test
One at
a Time?

4-UP 2X Faster

10-UP 3.8X Faster

20-UP 7.6X Faster

Turnkey Test Solution Developed to Meet Your Unique Test Specifications



Proven Production Test Platform

CheckSum ICT is a fast, accurate and stable test system with easy program development, a proven platform with billions of boards tested on over 4000 systems deployed globally. CheckSum is relied on by electronics manufacturers of automotive, telecom, medical, industrial, and consumer products. For over 30 years, CheckSum has provided flexible, cost effective test and programming solutions.

Specifications

System Specifications	
Press Down Force	<i>Pneumatic press provides up to 12 Kilo Newtons(2698 lbf) capability</i>
Fixture Compatibility	<i>CheckSum KIT1000-QC, KIT2KN-QC, KIT20- and KIT28 fixture kits</i>
3rd Party Instruments	<i>7U rack space available for 3rd party instruments</i>
Operating Temperature	<i>The test system range is 0°C to +35°C with 0 to 80% RH (without condensation)</i>
Rated accuracy	<i>At ±10°C from calibration temperature</i>
Maximum Altitude	<i>Maximum altitude for operation is 3000m (9843 ft.)</i>
Power Requirements	<i>Power 110-120/220-240 VAC 50/60Hz. 1.5kVA</i>
Compressed Air	<i>95-120 psi (655-827 kPa). with 40 micron filtering. 100 PSI (690 kPa) required for full probe loading.</i>
Standards	<i>CE Conformance</i>
Options	<i>Spare parts kits</i>

System Dimensions	
Depth	<i>114cm (45 inches)</i>
Width	<i>102cm (40 inches)</i>
Height	<i>149.2 cm (58.75inches)</i>
System Weight	<i>Approximately 350 lbs. (159 kg)</i>

PCB Specifications	
Fixture KIT28	<i>PCB probe area 24 x 13.2 inches (61 x 33.5 cm); up to 28 wiring blocks</i>
Fixture KIT20	<i>PCB probe area 16 x 13.2 inches (40.6 x 33.5 cm); up to 20 wiring blocks</i>
Max Component Height	<i>3.325 inches (845mm) top side / 2.92 inches (742 mm) bottom side</i>
PCBA Types Supported	<i>Rigid, Single Sided, Double Sided, Multi-layer, Flex, Flex-Rigid</i>

CHECKSUM

6108 188th Street Northeast
Suite B800 Arlington, WA 98223

P +1.360.435.5510
info@checksum.com



www.checksum.com



© Copyright 2021 Checksum. All rights reserved.

*TestJet Technology is protected under U.S. Patent Nos. 5,124,660 and 5,254,953.

MultiWriter Technology is protected under U.S. Patent No. 7,802,021. Parallel Functional Test is patent pending

CHECKSUM_12KN_PRINT_REV0121